

THE AMBROSE

An attractive double fronted, light and airy three bedroom semi-detached house, with a central hallway leading to a separate kitchen/diner and dual aspect lounge.

The kitchen is enhanced by French doors opening onto the rear garden. The cloakroom also doubles up as a convenient utility space.

To the first floor there are three bedrooms, the master benefitting from an en-suite and a three piece stylish bathroom suite.

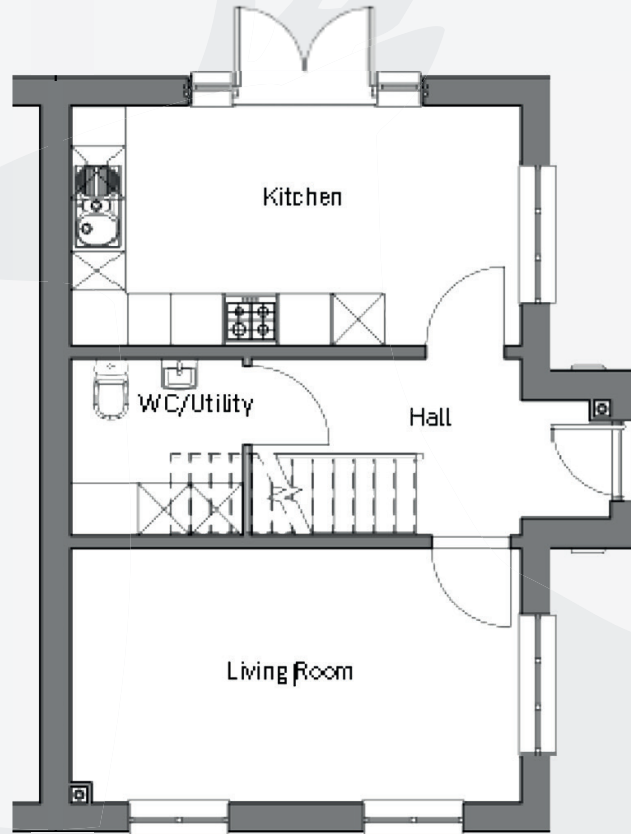




THE AMBROSE

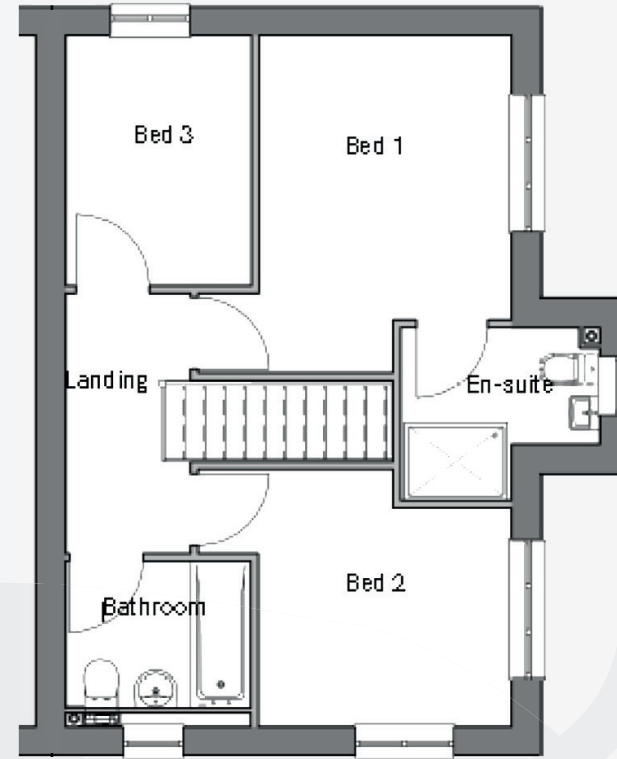
Features include:

- Double fronted
- Separate Lounge and kitchen/diner
- Attractive French doors from the kitchen, opening onto the garden
- Cloakroom incorporating a utility area
- Double driveway
- Learning thermostat



GROUND FLOOR (Dimensions)

	Metric (mm)	Imperial (feet & inches)
Living Room	5160 x 2910	16' 11" x 9' 6"
Kitchen	5160 x 2743	16' 11" x 9'
WC / Utility	1962 x 2044	6' 5" x 6' 8"



FIRST FLOOR (Dimensions)

	Metric (mm)	Imperial (feet & inches)
Bedroom 1	2934 x 3283	9' 7" x 10' 9"
En-Suite	2295 x 2012	7' 6" x 6' 7"
Bedroom 2	2944 x 2522	9' 8" x 8' 3"
Bedroom 3	2137 x 2888	7' x 9' 5"
Bathroom	2127 x 1695	7' x 5' 6"

For more information visit our website: www.porthomes.co.uk

Floor plans and layouts are approximate sizes. Dimensions are taken from Architects drawings, are given to the nearest 15cm (or equivalent in inches) and may differ in the as-built property. Maximum dimensions may include sloping ceilings, pillars, window bays, fitted wardrobes and other features. Floor plans and layouts should therefore not be used for purchasing items such as furniture or carpets. Each property should be individually measured. Computer generated images and artists' impressions are intended to give an impression of the design, based on information available to the artist at the time the image is created. They are not intended to be an accurate description of any specific property, its location or the surrounding area. Please speak to our Sales Advisor for further information.


PORT
 Homes

