

THE GREENWICH

An attractive and spacious three bedroom semi-detached house, perfect for family life.

A house designed with a well equipped kitchen/diner features French doors opening onto the rear garden, ideal for outdoor entertaining. A separate relaxing front facing living room and conveniently placed w.c and under stairs cupboard.

To the first floor you will find three sizeable bedrooms, the master benefitting from an en-suite and a stylish three piece family bathroom.

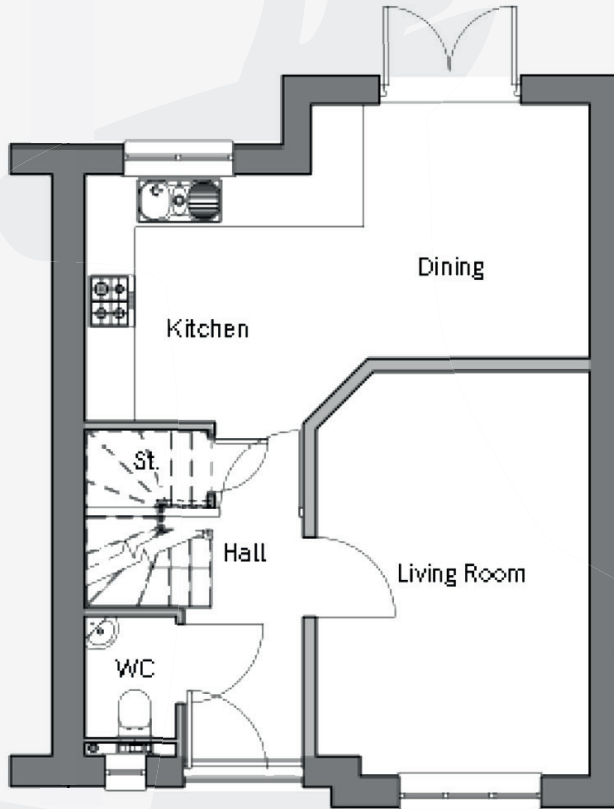




THE GREENWICH

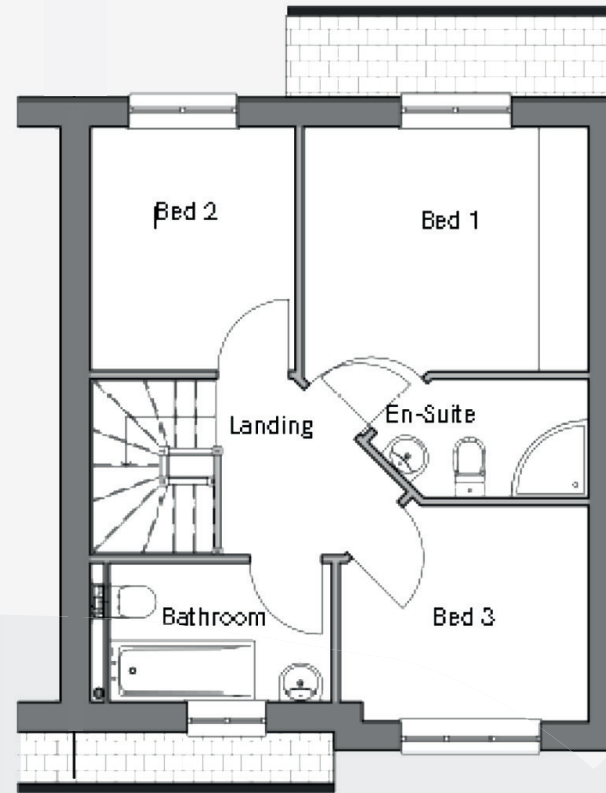
Features include:

- Modern kitchen/diner featuring French doors opening onto the rear garden
- Separate living room
- En-suite to master bedroom
- Stylish family bathroom
- Double driveway
- Learning thermostat



GROUND FLOOR (Dimensions)

	Metric (mm)	Imperial (feet & inches)
Living Room	3102 x 4627	10' 2" x 15' 2"
Kitchen / Dining	5747 x 2882	18' 10" x 9' 5"
WC	1059 x 1388	3' 5" x 4' 6"



FIRST FLOOR (Dimensions)

	Metric (mm)	Imperial (feet & inches)
Bedroom 1	3282 x 2824	10' 10" x 9' 3"
En-Suite	1793 x 1385	5' 10" x 4' 6"
Bedroom 2	2377 x 2816	7' 9" x 9' 3"
Bedroom 3	2862 x 2487	9' 4" x 8' 2"
Bathroom	2585 x 1600	8' 6" x 5' 3"

For more information visit our website: www.porthomes.co.uk

Floor plans and layouts are approximate sizes. Dimensions are taken from Architects drawings, are given to the nearest 15cm (or equivalent in inches) and may differ in the as-built property. Maximum dimensions may include sloping ceilings, pillars, window bays, fitted wardrobes and other features. Floor plans and layouts should therefore not be used for purchasing items such as furniture or carpets. Each property should be individually measured. Computer generated images and artists' impressions are intended to give an impression of the design, based on information available to the artist at the time the image is created. They are not intended to be an accurate description of any specific property, its location or the surrounding area. Please speak to our Sales Advisor for further information.

PORT
Homes

