

## THE PEMBROKE

A generous family designed four bedroom semi/detached house with a large kitchen/diner and convenient under stairs cupboard.

The private rear facing lounge overlooks the garden with French doors and side lights. Under stairs cupboard and ground floor w.c.

To the first floor there are four bedrooms, three being doubles.

The master bedroom benefits from an en-suite, as well as there being a spacious family bathroom. The landing has a further storage cupboard.

An integrated garage with access door to the rear together a driveway.

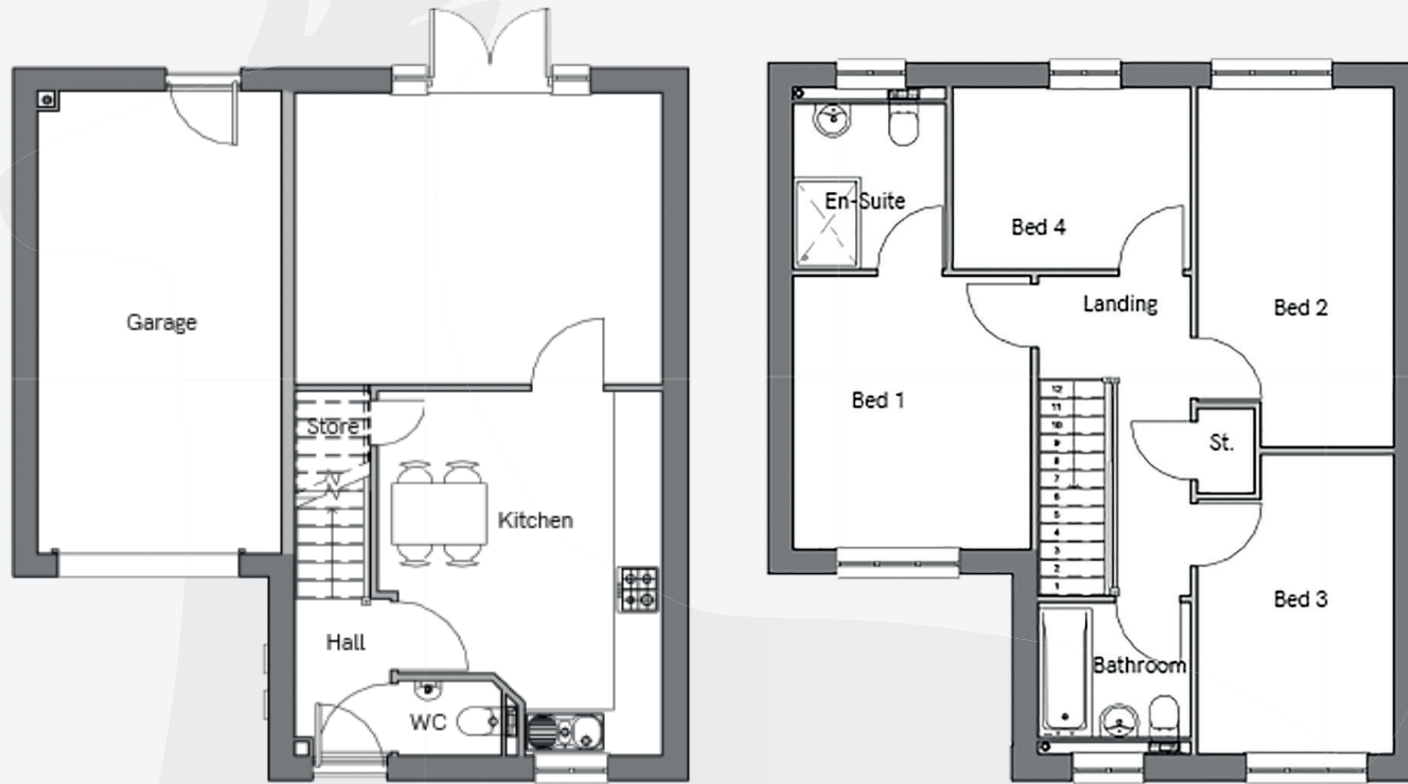




## THE PEMBROKE

### Features include:

- Open plan living room with French doors to rear garden
- Modern fitted kitchen with oven and hob
- Stylish bathroom
- Double driveway
- Learning thermostat



### GROUND FLOOR (Dimensions)

	Metric (mm)	Imperial (feet & inches)
Living Room	4597 x 3877	15' 1" x 12' 8"
Kitchen / Dining	3568 x 4805	11' 8" x 15' 9"
WC	1319 x 992	4' 4" x 3' 3"

### FIRST FLOOR (Dimensions)

	Metric (mm)	Imperial (feet & inches)
Bedroom 1	3087 x 3617	10' 1" x 11' 10"
En-Suite	1987 x 2167	6' 6" x 7' 1"
Bedroom 2	2549 x 4747	8' 4" x 15' 7"
Bedroom 3	2549 x 3934	8' 4" x 12' 11"
Bedroom 4	3059 x 2380	10' x 7' 10"
Bathroom	1960 x 1772	6' 5" x 5' 10"

For more information visit our website: [www.porthomes.co.uk](http://www.porthomes.co.uk)

Floor plans and layouts are approximate sizes. Dimensions are taken from Architects drawings, are given to the nearest 15cm (or equivalent in inches) and may differ in the as-built property. Maximum dimensions may include sloping ceilings, pillars, window bays, fitted wardrobes and other features. Floor plans and layouts should therefore not be used for purchasing items such as furniture or carpets. Each property should be individually measured. Computer generated images and artists' impressions are intended to give an impression of the design, based on information available to the artist at the time the image is created. They are not intended to be an accurate description of any specific property, its location or the surrounding area. Please speak to our Sales Advisor for further information.

  
**PORT**  
 Homes

